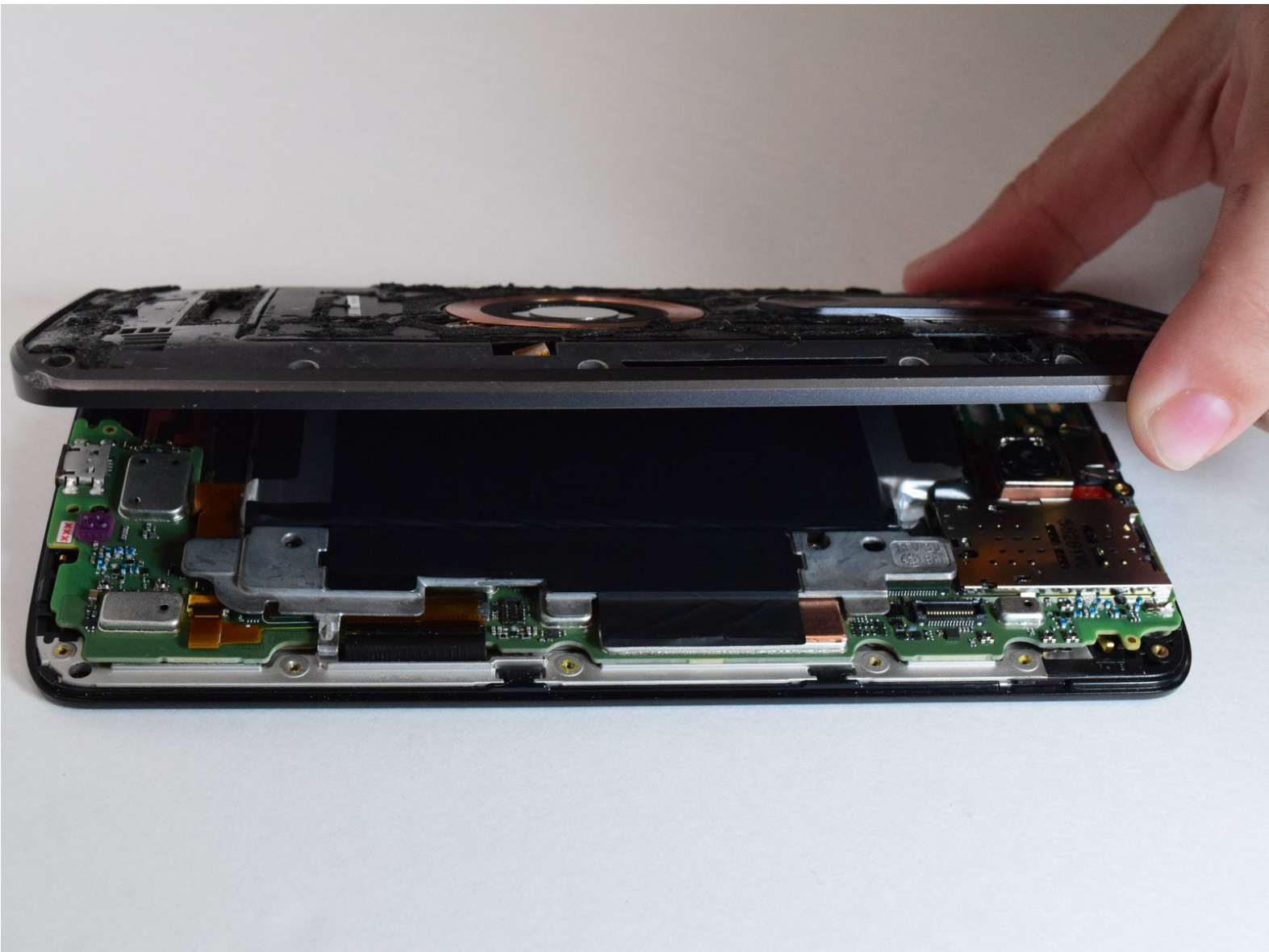




Motorola Droid Turbo 2 Midframe Replacement

Use this guide to remove the midframe of the Droid Turbo 2.

Written By: David Lu



INTRODUCTION

Follow this guide to remove the midframe of the Droid Turbo 2.



TOOLS:

- [SIM Card Eject Tool](#) (1)
 - [iFixit Opening Tools](#) (1)
 - [Tweezers](#) (1)
 - [Spudger](#) (1)
 - [T4 Torx Screwdriver](#) (1)
 - [iFixit Opening Picks set of 6](#) (1)
-

Step 1 — Midframe



- ❗ Power off your phone before you begin working.
- Pop out the SIM card with pointed tweezers or a SIM card eject tool by gently pushing inwards until the tray pops out.

Step 2



- Use an iOpener, heat gun, or hair dryer to heat the back side of the phone in order to soften the adhesive securing the back panel.
- Slide an opening pick or other slim pry tool around the perimeter of the back cover to separate it.

Step 3



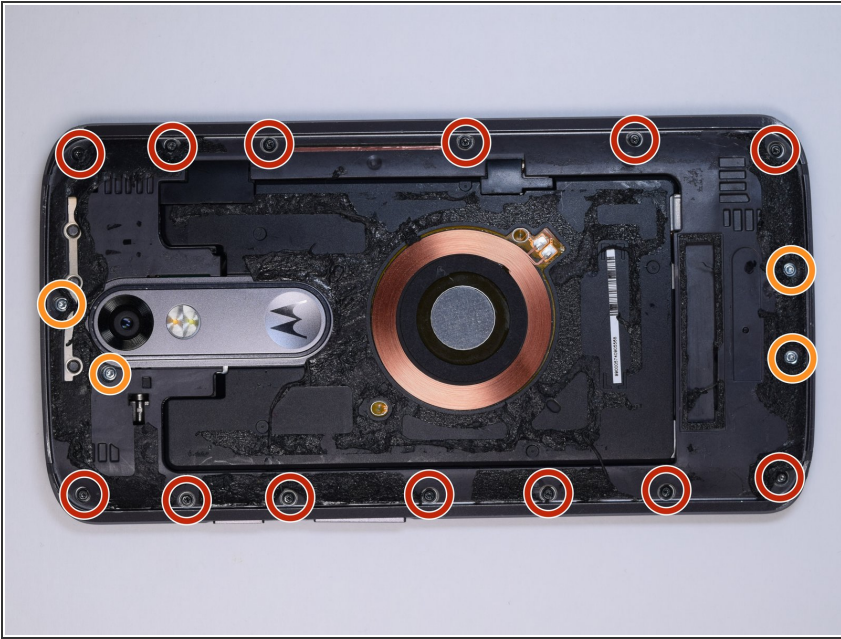
- Use the spudger to gently remove the two plastic covers.

Step 4



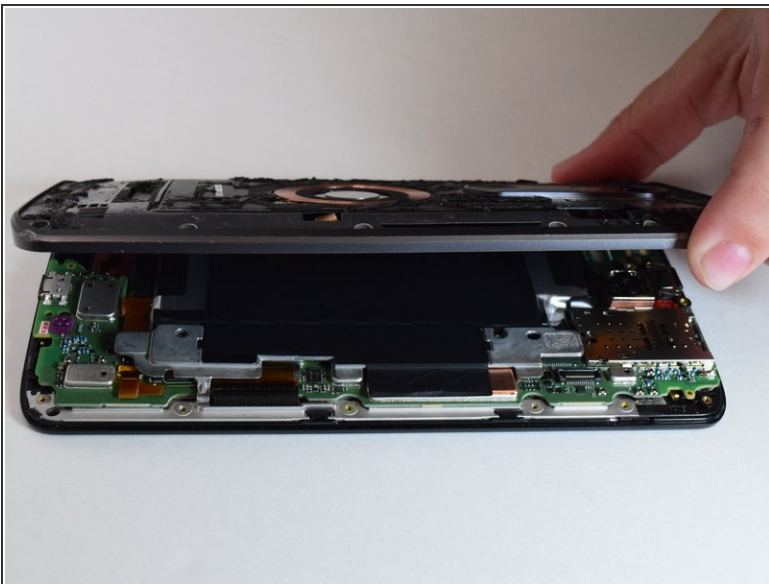
- Under the two plastic covers will be two connectors.
- Use a plastic opening tool to pry up the two connectors. These do not completely come off.

Step 5



- Remove the following screws securing the midframe:
 - Thirteen 4.0 mm Torx T4 (black)
 - Four 3.0 mm Torx T4 (silver)
- ⓘ Driver bit sizes are not always 100% consistent from one kit to the next. If a T4 doesn't work for you, try a T3.

Step 6



- Remove the midframe from the phone.
- ⓘ The volume and power buttons are likely to fall out of the device when removing the back cover. This is normal.

To reassemble your device, follow these instructions in reverse order.